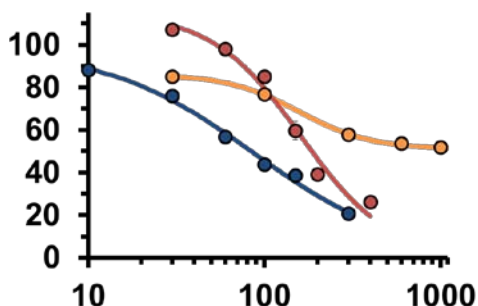
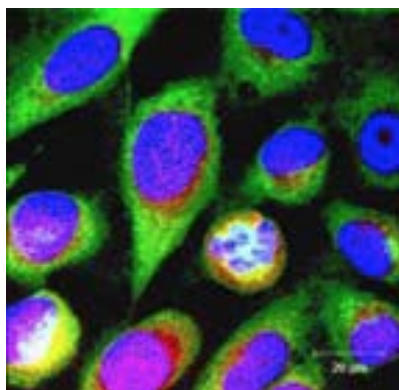


# Washington State University College of Pharmacy

## *Summer Research Fellowship (SRF)*



### **FREQUENTLY ASKED QUESTIONS (FAQ)**

#### **What is the Summer Research Fellowship (SRF) Program?**

The SRF program provides hands-on research experience for college students who have demonstrated scientific aptitude and an interest in pursuing graduate studies in a research career in the biomedical sciences. Our program is designed to boost our fellows' enthusiasm toward graduate education, and to embolden their ambition to pursue subsequent careers in pharmacology research. The program is funded by the American Society for Pharmacology and Experimental Therapeutics (ASPET) and by the WSU College of Pharmacy.

Under the guidance of a faculty mentor, each summer fellow will have the opportunity to actively contribute to a research effort during a ten-week period in June, July and August. Summer research opportunities are provided at Washington State University (WSU) on the Health Sciences campus in Spokane, WA.

Summer fellows will undergo necessary safety training at the start of the summer, perform research under the supervision of a faculty mentor, and are expected to present the results of their work at the end of the program at the College of Pharmacy Research Day. Summer fellows will participate in weekly meetings and discussions that provide career advice. Summer fellows will also receive information regarding graduate education opportunities in pharmaceutical sciences at WSU.

#### **Who is eligible to apply to the SRF Program?**

The program is open to undergraduate students interested in entering into a doctoral program and obtaining a Ph.D. Preference will be given to students entering into either their junior or senior year by the beginning of Fall Academic Term, 2019.

There are separate opportunities for PharmD students enrolled at WSU, or MS students enrolled at Heritage University, to participate in summer research in our college. Please inquire if interested.

**What is needed to apply to the SRF Program?**

Each applicant will submit a complete application, either electronically or in hardcopy, accompanied by unofficial transcripts from the student's undergraduate institution(s). In addition, applicants will need to submit two letters of recommendation from faculty members, or other individuals, who are familiar with the applicant's academic and/or professional performance. These materials must be submitted by midnight, Sunday, February 3, 2019.

**How are summer fellows selected?**

The Summer Research Fellowship selection committee evaluates each application on the basis of the materials submitted, which include two letters of recommendation from faculty members, or other individuals, familiar with the applicant's academic and/or professional performance, transcripts from all schools attended since high school, regardless of degree completion (unofficial transcripts are acceptable), and a personal essay.

**What types of research projects are available for summer fellows?**

The on-line informational material shows the broad range of research interests of faculty researchers in the College of Pharmacy. Summer fellows can choose from a number of different research opportunities.

**How will each student be assigned to a research laboratory?**

Applicants are encouraged to mention in their applications the research areas in which their interest lies. Accepted students will be assigned to research mentors, prior to June, in a "match" process that involves input from the SRF students as well as the faculty mentors.

**May international students apply to the program?**

International students who already have F-1 visas and are currently studying in the US are eligible to apply to the program.

**Will summer fellows be paid a stipend? Is housing available for summer fellows?**

Our 2019 summer fellows will receive a stipend of **\$3,000** for ten weeks of full-time research. However, fellows must pay for their own travel and lodging expenses, and are responsible for their own meals. We can provide assistance in searching for summer housing.

**Information and application forms can be found online at:**

<https://pharmacy.wsu.edu/research/surf/>

*Applications & supporting materials are due by midnight on Sunday, February 3, 2019.*

**Mailing Address:**

2018 SURF Program  
WSU College of Pharmacy  
P.O. Box 1495  
Spokane, WA 99210-1495

**Contact Information:**

Phone: (509) 358-7673

Fax: (509) 368-6673

E-mail: [pharmacy.surf@wsu.edu](mailto:pharmacy.surf@wsu.edu)

